

Sheffield Carers Centre

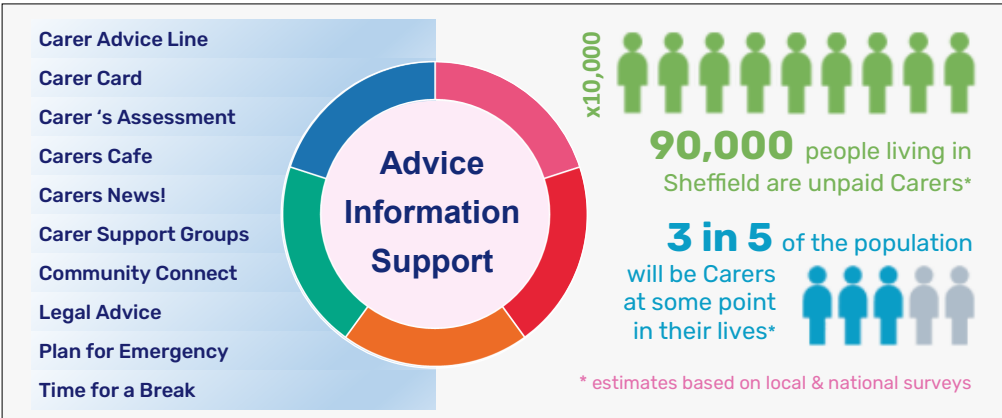
About us and our services

We are the major independent charity committed to helping Sheffield carers by providing high quality information, advice and support. We aim to reach out to all unpaid carers and ensure their needs are met.

Our vision is of a city where all carers are recognised, valued and effectively supported to enable them to continue caring in the way they choose and to have a life of their own; a city where the carers' contribution is respected and acknowledged.

Definition of a carer:

A carer is someone who provides practical and/or emotional support to an adult or child with an illness, disability, frailty, mental health problems or addiction.



We offer a range of support services:

We have been developing and delivering support services to carers in Sheffield for over 25 years. Details of how we can help are kept updated on the 'Our Services' page of our website so we recommend carers check the site and our social media pages for all the latest news.

Follow us on



@SheffieldCarers

Carer Advice Line: 0114 272 8362
Web: www.sheffieldcarers.org.uk



Sheffield Carers Centre

Carer Registration Form

Are you looking after someone?

We know it's not easy and are here to help you.

Sheffield Carers Centre can offer support with a wide range of services that are available to all unpaid adult carers in the city.

Use this form for free registration

Please complete the form below to register with the Carers Centre and become part of a network of 12,000 carers in the city or register online at: www.sheffieldcarers.org.uk

Everyone that registers is sent a 'Welcome Pack' by email or post. Every carer is also sent a Carer Card with details of offers on a range of activities, products and services.

Please post your completed form to:

Sheffield Carers Centre, Dearing House, 1 Young Street, Sheffield S1 4UP

Your Full name: Date of Birth:

Postal Address:

Email Address: Phone:

Gender: Male Female Other (please describe)

How do you define your ethnicity?

How long have you been caring for? Up to 6 months 7-12 months More than 1 Year

Where did you pick up this form?

We always keep your details safe and confidential as explained in our privacy policy on: www.sheffieldcarers.org.uk